




2022 ANNUAL REPORT

*Renewing*  
**HOPE**

**Cultivate**  
**Food Rescue**



**CULTIVATE  
IS DEVOTED TO  
ENDING THE  
CYCLE OF HUNGER  
IN THE LOCAL  
COMMUNITIES  
OF NORTHERN INDIANA BY  
PROVIDING A FOOD  
RESCUE SERVICE**





physical space, we shifted our perspective to ask, “What-if? How big can we make this?” We gathered the perspectives of community members, donors, volunteers, staff, and board members. Collectively, we concluded that it is time to take our vision of “No Neighbor Hungry, No Food Wasted” to the next level. We will launch a capital campaign to build a community freezer, allowing us to expand operations by twenty-fold.

The coming pages tell the story of Cultivate from the past year; a year that showed not just growth but future potential. As you read, we ask you to shift your perspective and ask, what if? As you do this, we believe that HOPE will settle in. Hope that, if we all do our part, this is a problem we can solve. In these pages, we believe you will see the potential of our organization and invest with us to continue to build an incredibly unique food rescue organization!

## PERSPECTIVES FROM LEADERSHIP

How you look at the world depends on many factors; culture, religion, education, economic status, upbringing, and current circumstances. Perspectives shape our thoughts, values, and lives. Living the mission of Cultivate challenges us to see the world through others’ eyes.

From the perspective of a low-income single parent; when Federal Covid relief was at its peak, that parent received stimulus checks, monthly payments of tax credits, additional funds at the adult and student level to purchase food, expanded rent and utility assistance, suspended student loan payments and financial and work accommodations for Covid related illnesses. Fast forward two years and all these programs have ended. As of March of 2022,

3.7 million children had fallen back into poverty. On top of losing financial support, this parent faces record high inflation. While our perspective may force us to cut back on Starbucks or take out because of high gas prices, the single parent’s options are vastly different. For a growing number in our community, their only option is to rely on community pantries and food assistance programs.

From an environmental perspective, in this country, we overproduce food at a rate of 40%. America wastes 133 billion pounds of food each year. The greenhouse gases that are produced by food waste are devastating.

From our perspective, if we could redirect 50% of this wasted food, we could feed every food insecure person in our country. Food insecurity is not a food supply issue, it is a logistical problem. Over the past year, as each day we realized that we were bursting at the seams, that we were limited by our current



*“Cultivate has been a huge blessing for us. We have served almost double the number of clients for the month of June 2022 as we did in 2021, with the same amount of purchased food. The free food that we get from Cultivate has helped us tremendously.”*

**Bread of Life Pantry**



# Table of CONTENTS

## INTRODUCTION

Perspectives from Leadership .....4  
 Mission and Vision .....8

## STORIES

Cultivate Cares Goes Digital.....13  
 Serving More Than A Meal.....14



## IMPACT

School May Take a Break for the Summer,  
 but Hunger Does Not.....19  
 By The Numbers.....20  
 Food Recipients.....21  
 Food Donors.....27



## FINANCIALS

Statement of Activities .....32  
 Statement of Financial Position .....33  
 Thank You .....34  
 Donors .....35

## GET INVOLVED

How to Get Involved .....38

## CELEBRATION

5 Years of Food Rescue! .....40

## KEY PEOPLE

Leadership.....42  
 Board of Directors.....43





## MISSION & VISION

### Mission

Through strategic partnerships, Cultivate Food Rescue will be a leader in perishable food rescue, procurement, redistribution, and education in order to meet the nutritional needs of communities.

### Vision

**No Neighbor Hungry**  
**No Food Wasted**

## WHY WE TAKE ACTION

### 40% of the U.S. Food Supply is Wasted

The environmental impact is devastating. The majority of this food is still fresh and delicious. Cultivate takes a logical approach to sustainability - rescue the food! With the help of volunteers and chefs, Cultivate takes the food that would otherwise go to waste and redistributes it to those who need it. *Your sponsorship of Cultivate saves our planet.*

### 68 Hours is How Long a Child May Go without Food on the Weekend

Cultivate's flagship program takes rescued food and turns it into nutritious frozen meals. Those meals are then delivered to schools and sent home with children to fill that 68 hour gap. They return to school on Monday ready to focus on learning! *Your sponsorship of Cultivate builds better futures for our children.*

### 13% of Our Neighbors Face Food Insecurity

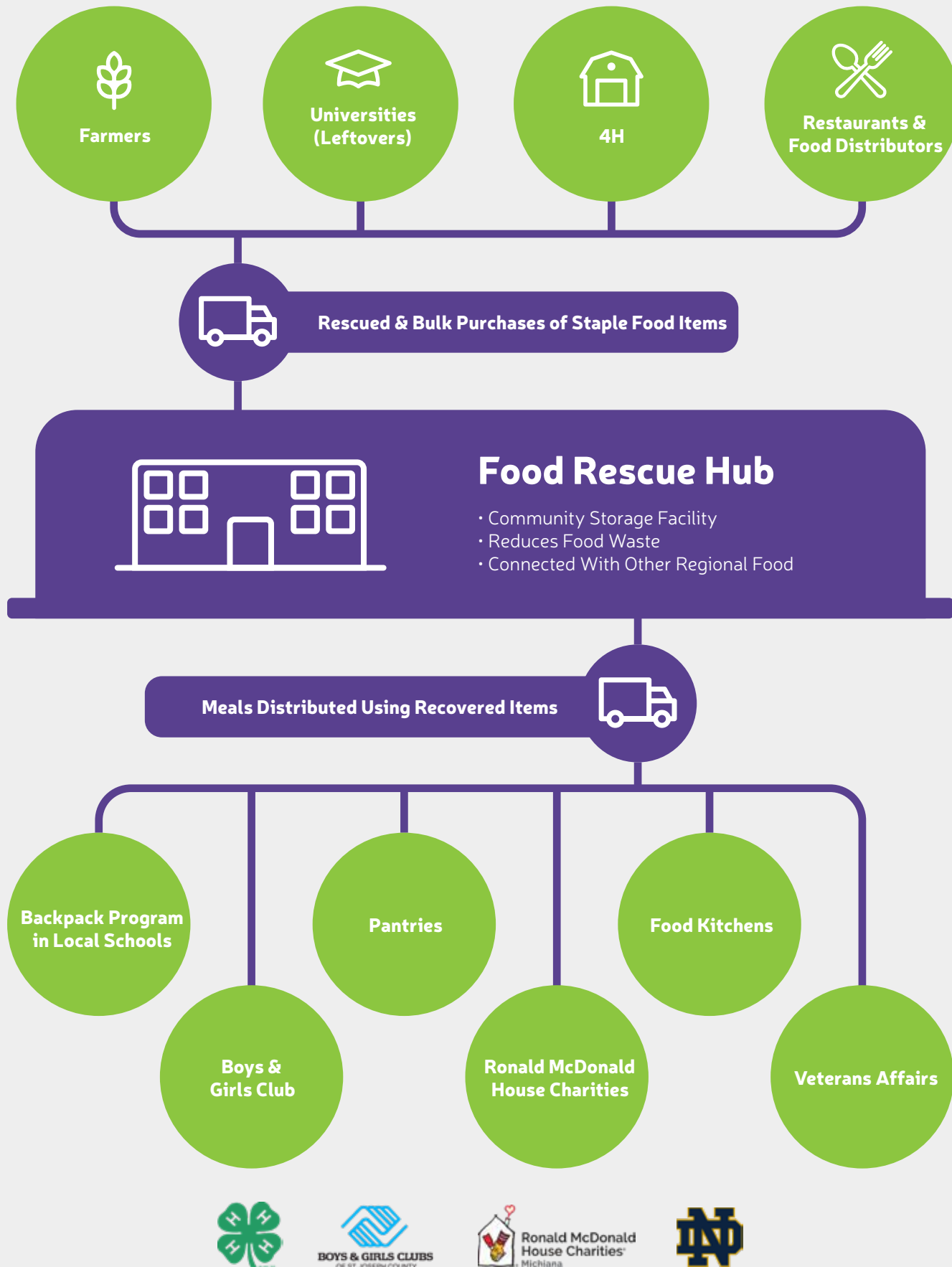
Cultivate Cares Food Network is our newest and fastest growing redistribution program. CCFN takes rescued food and redistributes it to pantries, soup kitchens, and other organizations that provide help to those who are food insecure. This food and support allow these organizations to run more efficiently and help more people. *Your sponsorship of Cultivate helps the helpers.*





# HOPEFUL STORIES

*See how Hope Transforms Lives*



## CULTIVATE CARES FOOD NETWORK GOES DIGITAL!

Prior to February 2022, the orders for food from pantry partners were a combination of emails, spreadsheets, voicemails, and post-It notes. To help as many organizations as quickly as possible, staff found themselves jotting orders down everywhere and often relying on memory for standing repeat orders. As both the quantity of rescued food increased as well as the need in the community, it was clear that Cultivate needed a dedicated online ordering system.

Working with an independent developer, who was funded by the Garatoni-Smith Family Foundation, Cultivate developed and launched its online ordering platform. It functions like Amazon in that pantries can see available stock, place orders, and set pick-up or delivery times right from their computers. This system has been a game-changer for both Cultivate and the organizations it serves.

Very quickly after the go-live, Cultivate found efficiencies in processing orders, allowing the service to grow from a controlled group of 20 pantries to now more than 80 active clients. Pantry partners are thrilled, as in a real-time environment, they can easily source items they need. The quantity of food distributed through the system routinely hits weekly records. A single

day record in March of 7,004 pounds was quickly overshadowed by a 9,081-pound day in April. Now it is not uncommon to have days where over 10,000 pounds (about half the weight of a school bus) of food goes out to pantries at no charge to them. There is not a shortage of food in our community, it is simply a matter of logistics. Continued growth is now dependent on the need for additional cold storage. Cultivate's expansion of a community cold storage facility will be the catalyst for this desired growth.

*“Our intent is to make a visit to a food pantry something to be excited about and not seen with a stigma. So whenever I see anything on your website that may be a smile maker for the kids, I jump on it. This month those strawberries were a delight to our visitors. They were better than the ones we saw at the grocery store.”*

**Lydick United Methodist Food Pantry**



# SERVING MORE THAN A MEAL

Volunteers come through our doors seven days a week. Our lead volunteers lead sessions on their own, some of them every week. Toddlers put labels on containers. Retirees chop onions. Drivers come in on their days off to help us with food rescue pick-ups. Factory workers pull weeds from our garden. Teachers bring classes of students. Coaches bring players. Workers bring colleagues. Parents bring children. Children bring parents.

Some come for community service hours. Others come as part of their school curriculum. A teenager is passionate about sustainability and making the environment a better place. A grandfather faced food insecurity as a child and wants to prevent others from meeting that same fate.

In the past year, over 4,000 individual volunteers donated 17,000 hours (that is nearly two full years!) of their time. They processed 261,827 meals. But that is just part of the story. We launched a Cultivators' volunteer program focusing on those dedicated individuals who showed up for a minimum of 12 sessions. We initiated 49 volunteers into this inaugural class! Springboarding off the NCAA basketball tournament, 11 organizations and businesses took part in our March Meal Madness- a competition of raising funds and packaging meals. Amy Zimmer, a special needs teacher at Penn High School, lead her students to pack their 10,000th

meal with us! We launched our first volunteer survey where 90% of respondents are very likely to recommend volunteering with Cultivate to a friend. We brought five additional professionals onto our Board of Directors. They joined the existing eight dedicated individuals in guiding our endeavors. These board members each additionally serve on one of five separate committees with 23 additional volunteers.

Like most non-profits, Cultivate relies heavily on the donation of time from volunteers. They are the engine that drives our business. We envision a world with No Neighbor Hungry, No Food Wasted. And like we always say, without our volunteers, our mission is just a dream.

*"I began volunteering at Cultivate in the summer of 2021. It has been an eye-opening experience to see and better understand the growing need for meal options for children and families in our local communities. Cultivate Food Rescue is an outstanding non-profit that is making a difference. Fun place to volunteer and you always leave with a smile on your face."*

**Laurie Mehrbrodt**



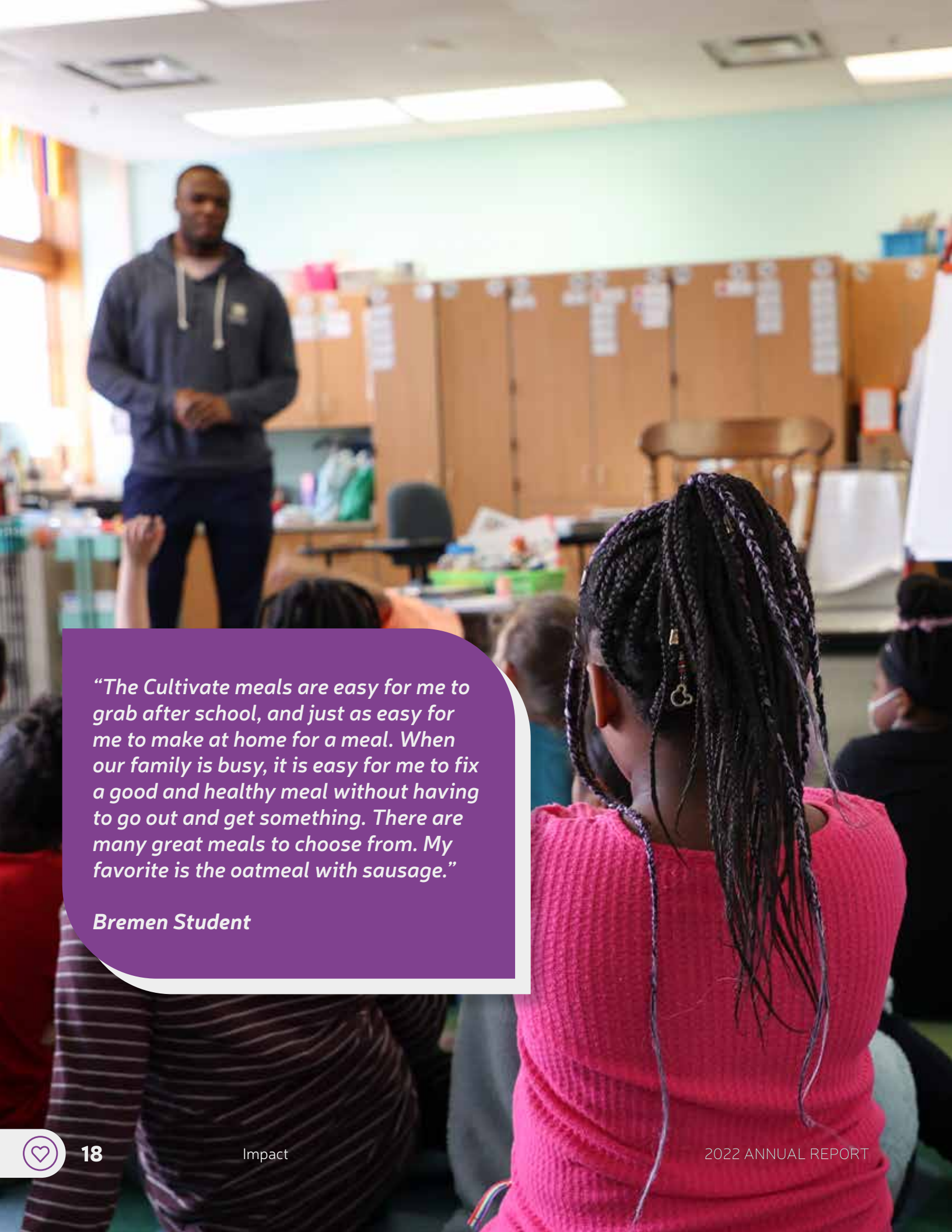


# MAKING AN IMPACT

*One Backpack at a Time*







*“The Cultivate meals are easy for me to grab after school, and just as easy for me to make at home for a meal. When our family is busy, it is easy for me to fix a good and healthy meal without having to go out and get something. There are many great meals to choose from. My favorite is the oatmeal with sausage.”*

**Bremen Student**

## SCHOOL MAY TAKE A BREAK FOR THE SUMMER, BUT HUNGER DOES NOT

Summer should be a time for kids to play, explore, and rest. A season full of baseball games, splashpads, bike rides, movie nights on the lawn, and firework shows. The only concern of food that should be on a child’s mind is when they can eat another ice cream cone. It’s our goal to make that a reality and remove hunger from a child’s list of worries. Cultivate was able to continue the momentum of our school backpack program into the summer with multiple school districts. We served nearly 1,000 students for seven weeks this

summer which is our greatest summer footprint in the community ever. With the help of partners like Goshen Health, Moontree Studios, local Boys & Girls Clubs, The United Way, and even Door Dash, Cultivate executed some creative solutions to distribute meals to food insecure students all summer long.

For the 2022-2023 school year, Cultivate is excited to grow to support 1,200 students in school districts across St. Joseph, Elkhart and Marshall Counties including South Bend, Elkhart, Plymouth, Wa-Nee, LaVille, Goshen, Argos, Bremen, Success Academy, and Marshall County Headstart. All of our resources- financial donations, food, volunteers, staff, and community partners-come together to support this program as we prepare 7,000 meals every week for hungry children.



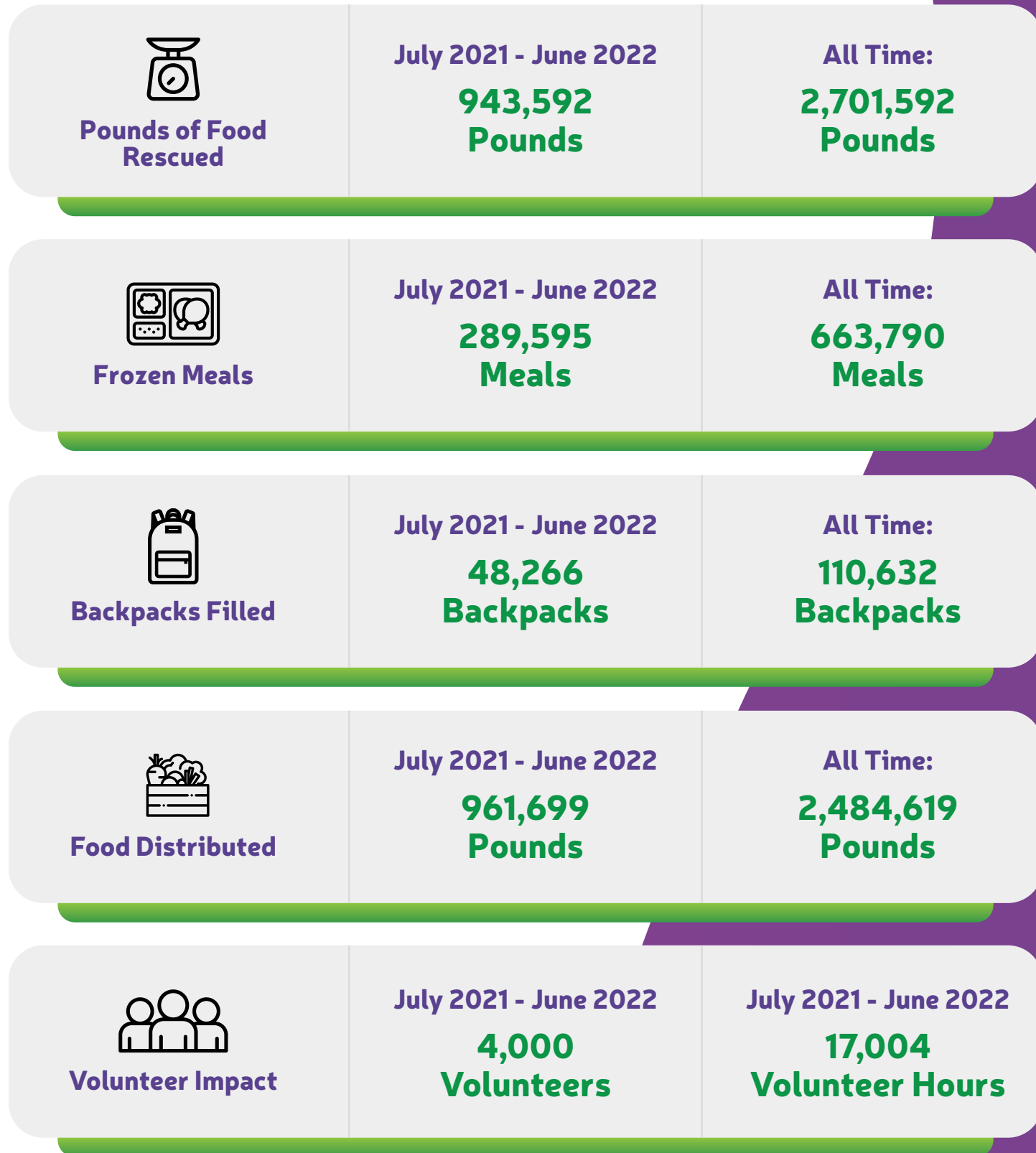
*“Cultivate has been an incredible blessing for our school. It’s hard to concentrate, behave and perform while hungry! Cultivate has removed barriers for our students in need. Each week, 35-40 of our students receive 6 high-quality meals to take home with them. Our families are grateful for the extra support in this particularly difficult time.”*

**Hope Amor,  
Principal at LaVille  
Elementary School**





# BY THE NUMBERS



# FOOD RECIPIENTS

## Backpack Program School Partners

Boys & Girls Club of Elkhart
Boys & Girls Club of Goshen
Boys & Girls Club of Middlebury
Bremen High School
Career Academy
Elkhart Community Schools: Beardsley Elementary
Elkhart Community Schools: Bristol Elementary
Elkhart Community Schools: Hawthorne Elementary
Elkhart Community Schools: Mary Beck Elementary
Elkhart Community Schools: Mary Feeser Elementary School
Elkhart Community Schools: Monger Elementary
Elkhart Community Schools: Northside Middle School
Elkhart Community Schools: Pierre Moran
Elkhart Community Schools: Pinewood Elementary
Elkhart Community Schools: Pride Academy
Elkhart Community Schools: Riverview Elementary
Elkhart Community Schools: Roosevelt Elementary
Elkhart Community Schools: Schools Without Walls
Elkhart Community Schools: Westside Middle School
Goshen Schools
LaVille Elementary School
Marshall County Head Start



### **Backpack Program School Partners**

Plymouth Community Schools: Jefferson Elementary
Plymouth Community Schools: Menominee Elementary
Plymouth Community Schools: Riverside
Plymouth Community Schools: Washington Discovery Academy
Plymouth Community Schools: Webster Elementary
South Bend Community School Corporation: Darden Elementary
South Bend Community School Corporation: Harrison Elementary
South Bend Community School Corporation: Lincoln Primary Center
South Bend Community School Corporation: Madison STEAM Academy
South Bend Community School Corporation: McKinley Elementary
South Bend Community School Corporation: Monroe Primary Center
South Bend Community School Corporation: Muessel Elementary
South Bend Community School Corporation: Nuner Fine Arts Academy
South Bend Community School Corporation: Wilson Primary Center
Starke County Head Start
Success Academy
Wa-Nee Community Schools: Nappanee Elementary
Wa-Nee Community Schools: Northwood Elementary
Wa-Nee Community Schools: The Achievement Academy
Wa-Nee Community Schools: Wakarusa Elementary
Wa-Nee Community Schools: Woodview Elementary

### **Cultivate Cares Food Network Partner Agencies**

AIDS Ministries
Antioch Missionary Baptist Church
Apostolic Temple Village
Beacon Medical Pavilion
Boys & Girls Club of Elkhart
Boys & Girls Club of St. Joseph County
Bread of Life Food Pantry
Briarcliff Health & Rehabilitation
Brick of Hope Ministries
Bristol Community Food Pantry
Broadway Christian Parish
Catholic Charities
Christ Temple Apostolic Church
Church Community Services
Clay United Methodist Church Food Pantry
David's Courage
Doulos Chapel
Elkhart County Parks
Family Christian Development Center
Food Fighters of John Glenn Community
For the Good



### Cultivate Cares Food Network Partner Agencies

Gethsemane Church of God
Goshen Urgent Care
Heart City Health
Hope 4 the Hungry
Hope Ministries
Housing Authority of South Bend
IUSB - Titans Feeding the Titans
Ivy Tech
Jimtown Food Pantry
Keller Park Church
Lasalle Park Homes
Life Treatment Center
Lydick UMSC Food Pantry
MAC Food Pantry, Albright Untied Methodist Church
Marshall County Council on Aging
Marshall County Neighborhood Center
Miami Hills Apartments
Miami Village Church
Middlebury Food Pantry
Milford Food Bank
Monastery of the Holy Martyrs
Monroe Circle Community Center

### Cultivate Cares Food Network Partner Agencies

Motels 4 Now
Near Northeast Neighborhood Center
New Carlisle Food Pantry
Niles Young Adults
Northeast Neighborhood Center
Oakhaven
Oaklawn
Open Gate Food Pantry
Our Lady of the Road
Plymouth Baptist Church
Plymouth Hospital
Poor Handmaids of Jesus Christ
Real Services
River Terrace
Ronald McDonald House Charities
Saint Joseph Hospital
Salvation Army - Elkhart
Salvation Army - Goshen
Serenity Place Plymouth
South Gate Food Pantry
Storehouse Food Pantry
St. Adalbert Catholic Church



**Cultivate Cares Food Network Partner Agencies**

St. Augustine Parish
St. Joe Pavilion
St. Joseph County Veteran Affairs Center
St. Margaret's House
St. Paul's United Methodist Church
St. Pius
St. Vincent de Paul
Suzanne's Kitchen
The Center for the Homeless
The Local Cup
The Whitlock, An Independent Living Community
The Window
University of Notre Dame Graduate School
Upper Room
Volunteers of America
YWCA

**Vendor Donations of 50,000+ Pounds**

Bimbo Bakery (NFI)
Marian High School
Milford Food Bank
Trader Joe's
University of Notre Dame

**Vendor Donations of 10,000-49,999 Pounds**

Canteen Vending Services
Church Community Services
Family Christian Development Center
Kopf Logistics
Meat Hunger (Martin's Butchering, J&J Meat Processing)
Midwest Food Bank
Stanz Food Service
Tippmann Group



## FOOD DONORS CONT.

### Vendor Donations of 1,000-9,999 Pounds

Bread of Life
Bristol Food Pantry
Century Center
Chick-fil-a
Chipotle
Clay Church Food Pantry
Costco
Fresh Thyme
Juday Creek
McCormick Spices
Meat Hunger: Rolands
Miller Poultry
Monogram Foods
Monroe Circle Community Center
Olive Garden
Pizza Hut
Purdue Polytech High School
Purple Porch Co-op
Rainfield Farms
Red Lobster

### Vendor Donations of 1,000-9,999 Pounds

Rise & Roll
South Bend Clinic
South Bend Community School Corporation
South Bend Cubs
Starbucks
St. Hedwig Memorial Center
St. Joseph Health System
Upper Room
Whole Foods
Woodie's Supermarket

*"The focus of our sustainability initiatives is to prevent food waste. Donating food to Cultivate is a source of pride for everyone on our staff. It means that we're feeding people in the community and saving the environment at the same time. Cultivate makes it so easy for us to accomplish our goals. They bring their truck for pick-ups four days a week and even on the weekends. It's one of the most meaningful things we do because we know we're preventing a lot of food waste and helping the whole Michiana area be fed and helping the food insecure."*

*John McCall | Trader Joe's Store Manager & Food Donor*



# FINANCIAL RECORDS

*Extending Our Reach*





# FINANCIAL SUMMARY

## Statement of Activities

*Fiscal Year Ending 6/30/2022*    *Fiscal Year Ending 6/30/2021*    *Variance*

### Support & Revenue

	<i>Fiscal Year Ending 6/30/2022</i>	<i>Fiscal Year Ending 6/30/2021</i>	<i>Variance</i>
<b>Public Support</b>			
Individual Contributions	\$ 1,118,138	\$ 301,615	\$ 816,523
Corporate and government contributions and grants	\$ 1,673,493	\$ 994,332	\$ 679,161
Special Events, Net	\$ 166,300	\$ 81,327	\$ 84,973
In-kind Contributions	\$ 65,563	\$ 5,958	\$ 59,605
<b>Total Public Support</b>	<b>\$ 3,023,494</b>	<b>\$ 1,383,232</b>	<b>\$ 1,640,262</b>
<b>Program Revenue</b>			
Rescued Food	\$ 2,129,832	\$ 2,014,982	\$ 114,850
Other revenue	\$ 65,677	\$ 7,362	\$ 58,315
<b>Total Program Revenue</b>	<b>\$ 2,195,509</b>	<b>\$ 2,022,344</b>	<b>\$ 173,165</b>
<b>Total Support &amp; Revenue</b>	<b>\$ 5,219,003</b>	<b>\$ 3,405,576</b>	<b>\$ 1,813,427</b>
<b>Expenses</b>			
<i>Program Services:</i>			
Food Rescue and hunger relief	\$ 3,807,296	\$ 2,296,552	\$ 1,510,744
<i>Supporting Services:</i>			
Management and General	\$ 178,873	\$ 143,878	\$ 34,995
Fundraising	\$ 380,773	\$ 251,371	\$ 129,402
<b>Total Expenses</b>	<b>\$ 4,366,942</b>	<b>\$ 2,691,801</b>	<b>\$ 1,675,141</b>
<b>Change in net assets</b>	<b>\$ 852,061</b>	<b>\$ 713,775</b>	<b>\$ 138,286</b>

## Statement of Financial Position

*Fiscal Year Ending 6/30/2022*    *Fiscal Year Ending 6/30/2021*    *Variance*

### Current Assets:

Total Cash and cash equivalents	\$677,006	\$474,030	\$202,976
Certificates of Deposit	\$691,000		\$691,000
Accounts Receivable	\$402,377	\$1,500	\$400,877
Inventory Rescued Food	\$305,475	\$905,686	(\$600,211)
Other Assets	\$9,840	\$5,840	\$4,000
Property and Equipment	\$1,089,714	\$966,776	\$122,938
<b>Total Assets</b>	<b>\$3,175,412</b>	<b>\$2,353,832</b>	<b>\$821,580</b>

### Liabilities:

Accounts Payable	\$39,383	\$25,687	\$13,696
Accrued Expenses	\$9,888	\$24,429	(\$14,541)
Debt	\$322,183	\$351,819	(\$29,636)
<b>Total Liabilities</b>	<b>\$371,454</b>	<b>\$401,935</b>	<b>(\$30,481)</b>

### Net Assets:

Without donor restrictions	\$1,574,147	\$1,935,479	(\$361,332)
With donor restrictions	\$1,229,811	\$16,418	\$1,213,393
<b>Total Net Assets</b>	<b>\$2,803,958</b>	<b>\$1,951,897</b>	<b>\$852,061</b>



## THANK YOU!

Every meal we deliver, every pound of food we rescue, every pantry we serve, every student we impact is a direct result of the constant support we receive from individual donors, corporate sponsors, generous foundations, food donors, our incredible volunteers and community supporters. Thank you. We truly could not do this without you. 2022 has already been a great year and we are looking forward to building on this momentum with your generosity!

## FINANCIAL DONORS

### DONATIONS EXCEEDING \$25,000

AEP Foundation  
Community Foundation of St. Joseph County  
Crossroads United Way, Inc.  
Digger Specialties, Inc.  
Four Individual Donors (Wish to remain Anonymous)  
Gurley Leep Automotive Family  
Larry & Judy Garatoni  
Marshall County Community Foundation  
RSM US  
Tony & Tammy Magaldi  
University of Notre Dame

### DONATIONS BETWEEN \$15,000 - \$24,999

Laidig Systems, Inc.  
Leighton-Oare Foundation  
Matt & Sharon Edmonds  
Nappanee Missionary Church  
Plute Family Foundation  
Poor Handmaids of Jesus Christ PHJC  
Rob Schlipf  
Smoker Craft Inc.  
The Center – Family Christian Development  
Tire Rack  
United Way of Marshall County  
Wyatt Merchants

### DONATIONS BETWEEN \$5,000 - \$14,999

1st Source Foundation  
525 Foundation  
Adam & Melissa Maxwell  
Al & Mary Harding  
Arby's Foundation (Inspire Foundation)  
Beacon Credit Union Foundation

Beacon Health System  
Beck Foundation  
Brandon Brenner  
Centier Bank  
Dan & Stephanie Bursley  
Doug Smoker  
First State Bank  
Four Winds Casino: New Buffalo  
Grant and Virginia Hellwarth Charitable Fund  
Gregg & Sandy Maggioli  
Headsight Inc  
HealthLinc  
Indiana State Department of Health  
James D. Pomeroy  
Joann and Leonard Isban Charitable Foundation  
Kashif & Areeba Shaikh  
Kent & Jenny Piotrowski  
Key Bank  
Kroger Co. Foundation  
Lippert  
Logistick  
Meijer  
Michael & Connie Joines  
Monogram Foods Monogram Loves Kids Foundation  
NiSource Charitable Foundation  
Nuveen (TIAA Company)  
Old National Bancorp Foundation  
Pat & Bob Kill  
Prime Foundation, Inc.  
Quality Dining, Inc.  
Quality Window and Door  
Richard & Betty Jo Carr  
R. Yoder Construction, Inc.  
Saint Joseph Health System  
St. Vincent de Paul (St. Pius X)  
Teachers Credit Union



The Accounting Firm, Inc.  
Thomas and Eileen Hughes Family Fund  
United Way of St. Joseph County  
Wakarusa Missionary Church  
Westfield Insurance Foundation

### **DONATIONS BETWEEN \$2,000 - \$4,999**

1st Source Bank  
100 Women Who Care Michiana  
Art Sears  
Barnaby's South Bend  
Beacon Health System Foundation  
Bryan Nafrady  
Charles Schramm  
Christ the King Lutheran Church  
Community Foundation of Elkhart County  
Corteva  
CTE Solutions  
Cutting Edge Machine & Tool  
Dave & Bonnie Blessing  
Diana Stuckman  
Dorothy Taiclet  
Dynamic Mechanical  
Dynamic Mortgage Solutions, LLC  
Extreme Fireworks  
Gibson Insurance  
Greg & Becky Freehauf  
Growing Kids Learning Centers  
Healy Financial  
Heritage Financial Group, Inc.  
Hockey 4 Life  
Horse Saddle Shop  
HRP Construction, Inc.  
Jan Farron  
John De Souza  
John Peisker  
Kelly Cares Foundation  
Kendra & Joel Laidig

Kiwanis Foundation of South Bend  
Knapick Ventures LLC  
Kuert Concrete  
Kurt & Jolene Stiver  
Lake City Bank  
Laura Polian  
Linda Jamieson  
Lions District 25-G  
Marian University's Ancilla College  
Marine Fasteners Inc.  
Michael Garatoni  
Milestone Contractors North Inc.  
Miller Insurance Group  
Mint City Utility Services, LLC  
Network for Good  
Palmer Funeral Home  
Personnel Partners  
Phil Lehman  
Schmuhl Family Foundation  
Shan and Priscilla Hartsough  
South Bend Clinic  
South Bend Community School Corporation  
Spartan Tool LLC  
Star Fleet Trucking  
Stephen & Barbara Fredman  
Steve Hunter  
St. John the Evangelist Church  
St. Pius X Church  
Sue Kinnucan  
Temple Beth-El  
The Vineyard Church  
Thomas Edgerton  
Tracy Weber  
United Federal Credit Union  
ZolmanTire



*“With more than 1 million Hoosiers in need of food assistance, Kroger remains committed to its goals, striving to improve food access and create communities free of hunger. We proudly do that in support of essential partners such as Cultivate Food Rescue...”*

*Eric Halvorson, Financial Donor  
Kroger, Manager of Corporate Affairs*

## HOW TO GET INVOLVED



### Give Online

#### Donate Now!

[CultivateFoodRescue.com/Donate](https://CultivateFoodRescue.com/Donate)

Your contribution will go directly to the program of your choice!



### Give By Mail

Make Your Check out to Cultivate Food Rescue

#### Mail To:

**Cultivate Food Rescue**  
1403 Prairie Avenue  
South Bend, IN 46613



### Corporate Involvement

Visit [cultivateculinary.com/partner-with-us](https://cultivateculinary.com/partner-with-us) for more information or contact **Todd Zeltwanger** at [ToddZ@cultivatefoodrescue.com](mailto:ToddZ@cultivatefoodrescue.com)

#### Your Business or Organization

Can be a financial sponsor, volunteer as a group, or schedule a tour or Lunch & Learn today!



### Volunteer

Volunteering with Cultivate is a fun and easy way to serve the community! We love working with individuals, companies, teams, organizations and small groups to transform lives in Northern Indiana.

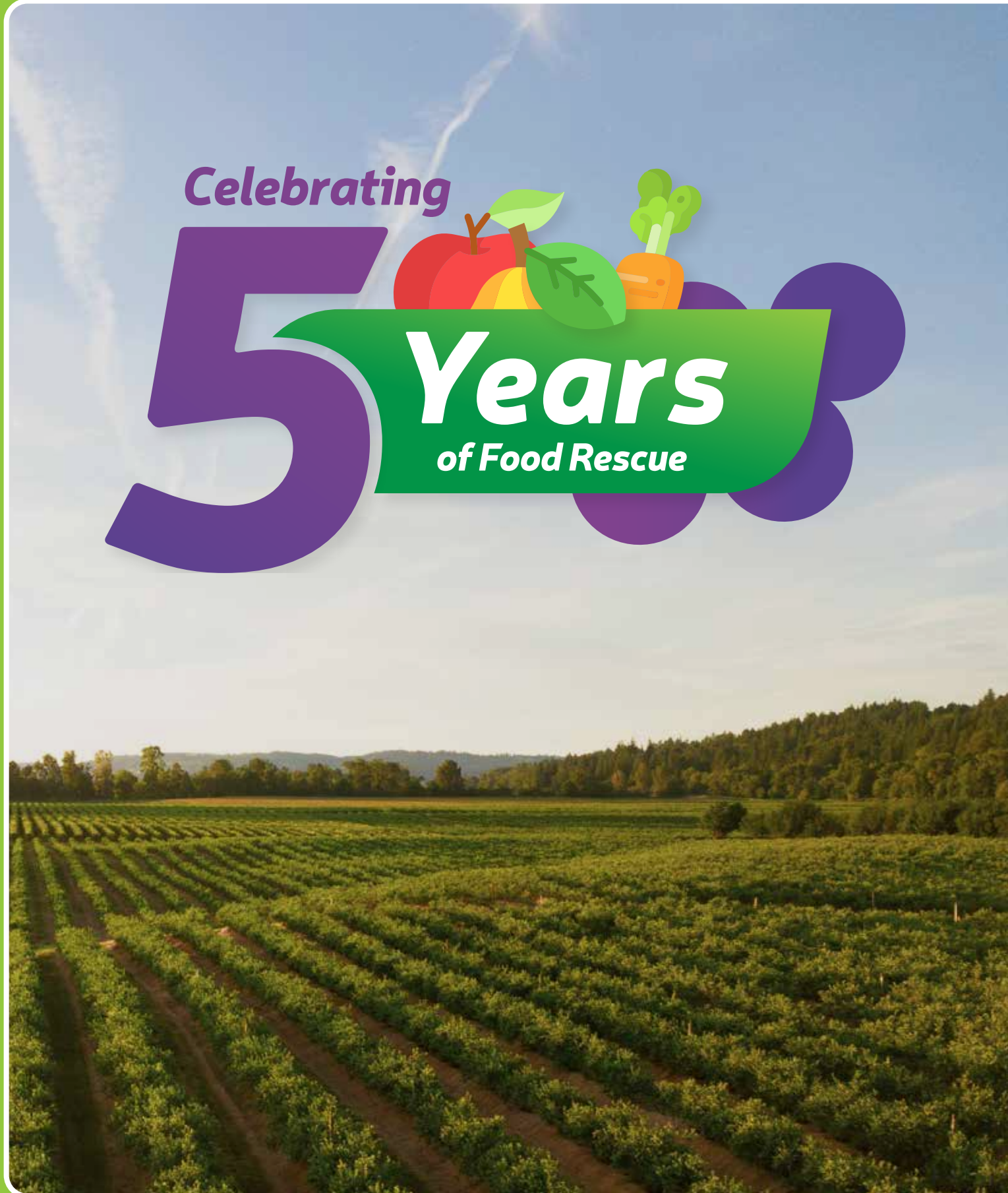
#### Sign Up!

[CultivateFoodRescue.com/Volunteer](https://CultivateFoodRescue.com/Volunteer)

or contact

[ShellyA@cultivatefoodrescue.com](mailto:ShellyA@cultivatefoodrescue.com)







## Leadership



**Randy Z**

Co-Founder, Director of Operations & Executive Chef



**Jim Conklin**

Co-Founder & Executive Director



**Todd Zeltwanger**

Director of Fund Development



**Lainie Holland**

Director of Planning & Programs



**Shelly Alwine**

Volunteer Coordinator



**Bob Herbert**

Food Sourcing Agent



**Greg Myszak**

Food Rescue Driver



**Rich Kolczynski**

Food Rescue Driver



**Kevin Guenther**

Chef



**Laura McNally**

Director of Outreach



**TySheena Williams**

Office Coordinator



**Sean Corbett**

Food Logistics Coordinator

## Board of Directors

### **TROY HOLLAND**

Board President  
*Regional Audit Leader, RSM*

### **TOM EDGERTON**

Vice President  
*Retired, Edgerton Travel Service*

### **GRANT HELLWARTH**

Treasurer  
*Partner, Action Coach One*

### **JESSICA BROOKSHIRE**

Secretary  
*Senior Program Director, University of Notre Dame*

### **STEVE HUNTER**

Vice President  
*Quality Dining, Inc.*

### **HUGH JOHNSON**

Chief Fire Starter  
*J2 Marketing*

### **JOHN TIPPMANN III**

Vice President of Sales Strategy  
*Tippmann Group*

### **MERRITT DILTS**

Vice President of Business Resources  
*The Center for Business Excellence*

### **BILL ZIMMER**

Retired  
*TSI Technology Group*

### **AMANDA ZALUCKYJ**

Attorney at Law  
*Jones Obenchain, LLP*

### **BYRON CHARTIER**

Vice President (Quality)  
*Lippert*

### **KAREN WAGNER**

Retired  
*RSM*

### **CARY McCLENDON**

Store Director  
*Meijer*





1403 Prairie Avenue  
South Bend, IN 46613

(877) 725-2016  
[cultivateculinary.com](http://cultivateculinary.com)  
[info@cultivateculinary.com](mailto:info@cultivateculinary.com)

